

RECTANGULAR



When there is limited physical space and high air capacity demands, Rectangular Ductwork is the perfect solution. At **MKT**, our products are expertly crafted to exceed SMACNA construction standards. Our rigorous quality control guidelines ensure that we meet state and federal requirements, as well as our own highest standards.

MKT is a major manufacturer of Commercial and light Industrial Ductwork, and HVAC materials. We use the latest equipment and strategic processes to produce large volumes of high-quality products. Focused on providing excellent customer service, we ensure that all projects receive comfort and quality through our expertise in fabricating the conduit for conditioned air conveyance.

Ductwork Construction:

Unlined – Most commonly receives external insulation after installation of the product.

Acoustically lined – Internally lined to achieve required R value and acoustic properties. Several liner types and thicknesses available.

Double-Wall lined – Internally lined ductwork which is secured by way of an internal layer of sheet metal. 23% O.A. with 3/32" holes, on 3/16" staggered perforated and solid inner-walls, standard. Custom perforations available.

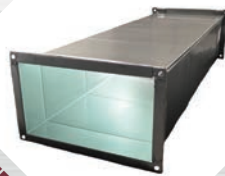
Connections:

- TDC/TDF – Rolled on transverse connections, 18" & above – Standard
- Slip-on Flanges – Fastened to duct ends – Where specified
- Slip/Drive – For low pressure duct under 18"
- Various types for duct to duct accessory fastening

Accessories:

In addition to ductwork fabrication, **MKT** offers customers the option to include various accessories

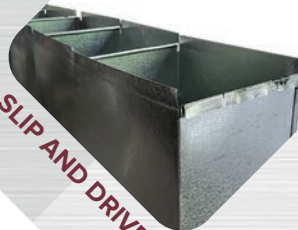
- Balancing Dampers: **MKT** OBD, single blade, purchased
- Access Doors
- Filter Racks
- Tap Installation/cut-outs
- Grill Boxes
- Plenums
- Custom enclosures and much more!



TDC



SLIP-ON FLANGE



SLIP AND DRIVE



DOUBLE-WALL

- **GAUGES:** 26-16 Galvanized Steel & Stainless Steel/20-16 Aluminum
- **CONSTRUCTION:** Materials are fabricated to SMACNA standards, to meet project specifications
- **MATERIALS:** Galvanized, Galvannealed, Stainless Steel, Aluminum, AgION Antimicrobial treated Steel
- **STANDARDS:** 56" TDC/TDF, 59" Slip & Drive, Submittal provided upon request and award of scope
- **SEAMS:** Pittsburgh (Large and Small), Snap Lock
- **PRE-ASSEMBLY** of duct runs available upon request